

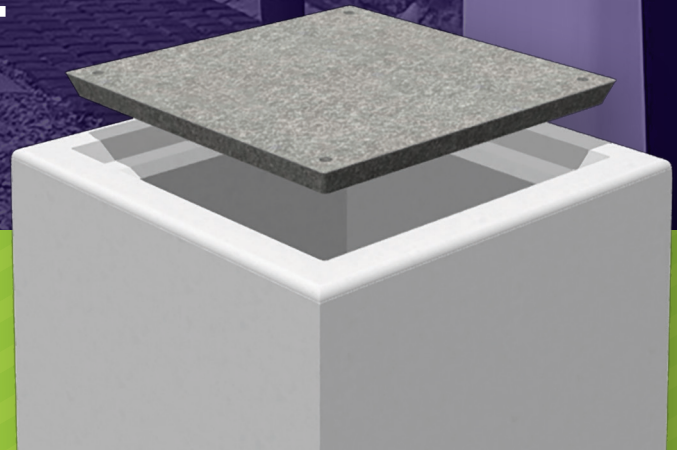


EV BLOCKS.COM

PRECAST SOLUTIONS FOR ELECTRIC VEHICLE CHARGING STATIONS



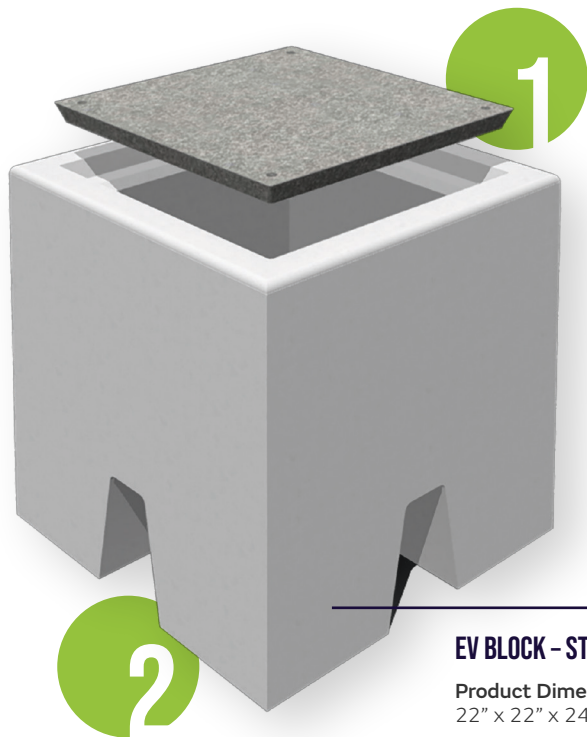
Scan to
learn more!



THE SOLUTION YOU'VE BEEN WAITING FOR

- Fast, easy and efficient installation
- Produced in a controlled environment ensuring quality and consistency
- Available when you need it
- Unique universal features to meet you project requirements
- Engineered and tested
- Backed by a team with the knowledge and resources to make your project a success





EV BLOCK - STANDARD

Product Dimensions:
22" x 22" x 24" tall

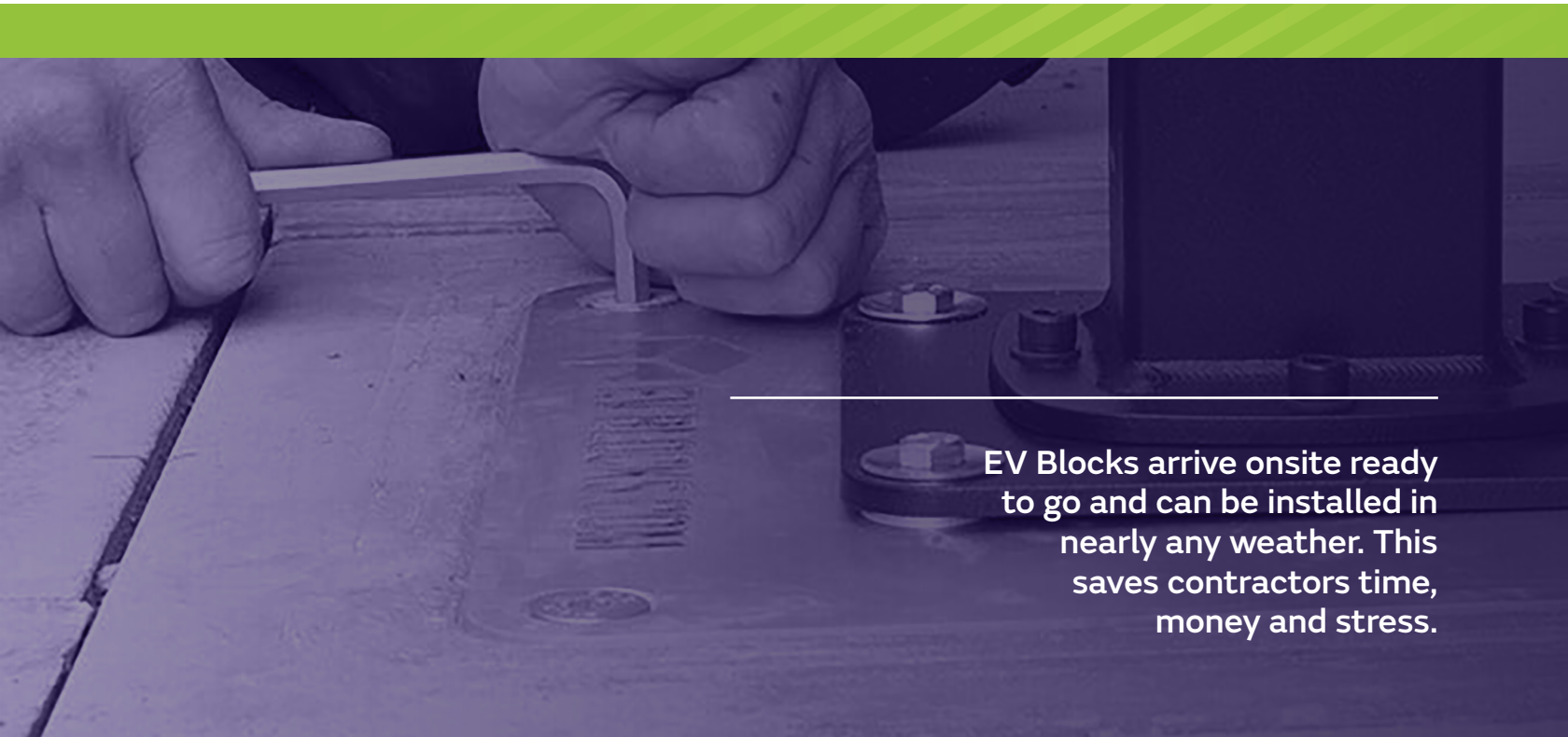
Approximate Weight:
640 pounds

1 UNIVERSAL TOP PLATE:

- Can accommodate nearly all Level 2 chargers
- Can be installed before chargers are chosen or specified
- Blocks can be installed for future expansion – futureproofing your site
- Allows for easy maintenance or future charger changeout
- ADA slip resistant compliant and load rated when used in a passive installation

2 SIDE OPENING:

- Four side openings to accommodate conduit from any direction
- Allows for conduit ducting up to 6" diameter
- Can be used as a cable pulling access point



EV Blocks arrive onsite ready to go and can be installed in nearly any weather. This saves contractors time, money and stress.



EV Blocks is produced and marketed pursuant to a license agreement with Recon Wall Systems, Inc., 11521 Eagle Street Suite 3, Coon Rapids, MN 55448

Patent Pending: WO2020245613

EVBLOCKS.COM/US

Distributed by: